

# mySensors Express

## Quick Start Guide

### mySensors Express (PC Software) Setup

- Visit <http://support.smart-telematik.se/> to download and install the mySensors Express software.
- Launch the mySensors Express installer and follow the on-screen instructions.
- Launch the mySensors Express program.
- Activate the Express software with the code you received when purchasing.



- Add the gateway(s) and wireless sensors to the software.



- Click on "About", then "Local IP Addresses" and make note of the IP address that your computer is using on your network.



### Gateway Setup for mySensors Express

#### USB Gateway

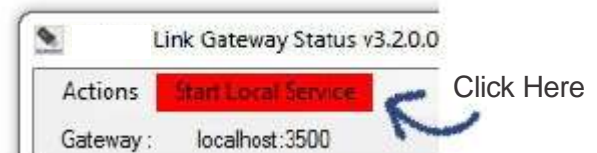
- Visit <http://support.smart-telematik.se/> to download mySensors USB Driver and USB Gateway Application.
- Install mySensors USB driver and USB gateway application by launching the downloaded files and following the on-screen instructions.
- Click "Actions" then "Configure Server Location".



- Enter the IP address from mySensors Express into the server address box, and use 3000 as the default communication port, then click save.



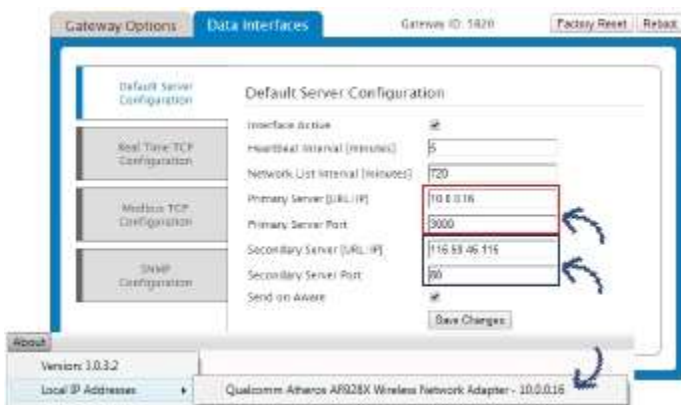
- Start the gateway's local service.



- Plug the USB gateway into your PC.

## Ethernet Gateway

- Connect the Ethernet Gateway directly to the Ethernet port of your PC using a standard Ethernet cable.
- Plug in the power cable.
- While the device is booting, press and hold the reset button on the back (all three lights will flash red). Release the button and the device is in local configuration mode.
- Open a web browser (e.g. Chrome) and go to 192.168.100.1. This will bring you to the gateway configuration page.
- Click on the “Data Interfaces” tab.
- Enter the IP address from mySensors Express into the primary and secondary server [URL/IP] boxes, and use 3000 as the default communication port, then click “Save Changes”.



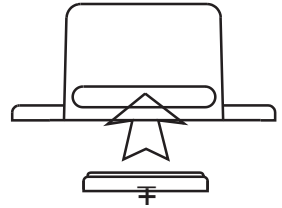
- When finished, click the “Reboot” button on the top right side of the page to restart the gateway.
- When the lights begin flashing on the gateway, you can unplug it and disconnect it from the computer.
- Connect the Ethernet Gateway to your local network router (needs to be the same network as the computer running express) and power the device on.
- The lights will flash and go solid green when the gateway connects to the mySensors Express software.

## Power Up Sensors and Begin Using the mySensors Express Software

- Check that the gateway status has changed to active in mySensors Express.



- Insert batteries into the wireless sensors.



- Check that the sensors change to active.



- The mySensors Express software is now collecting sensor data.

For more detailed instructions, documentation, “how-to” guides and video demonstrations on using mySensors Express wireless sensors, gateways, and mySensors Express, visit our support page at <http://support.smart-telematik.se/>

Rejoin Telematics AB  
Ärlestigen 2  
703 48 Örebro

019 - 10 22 55  
[www.rejoin.se](http://www.rejoin.se)